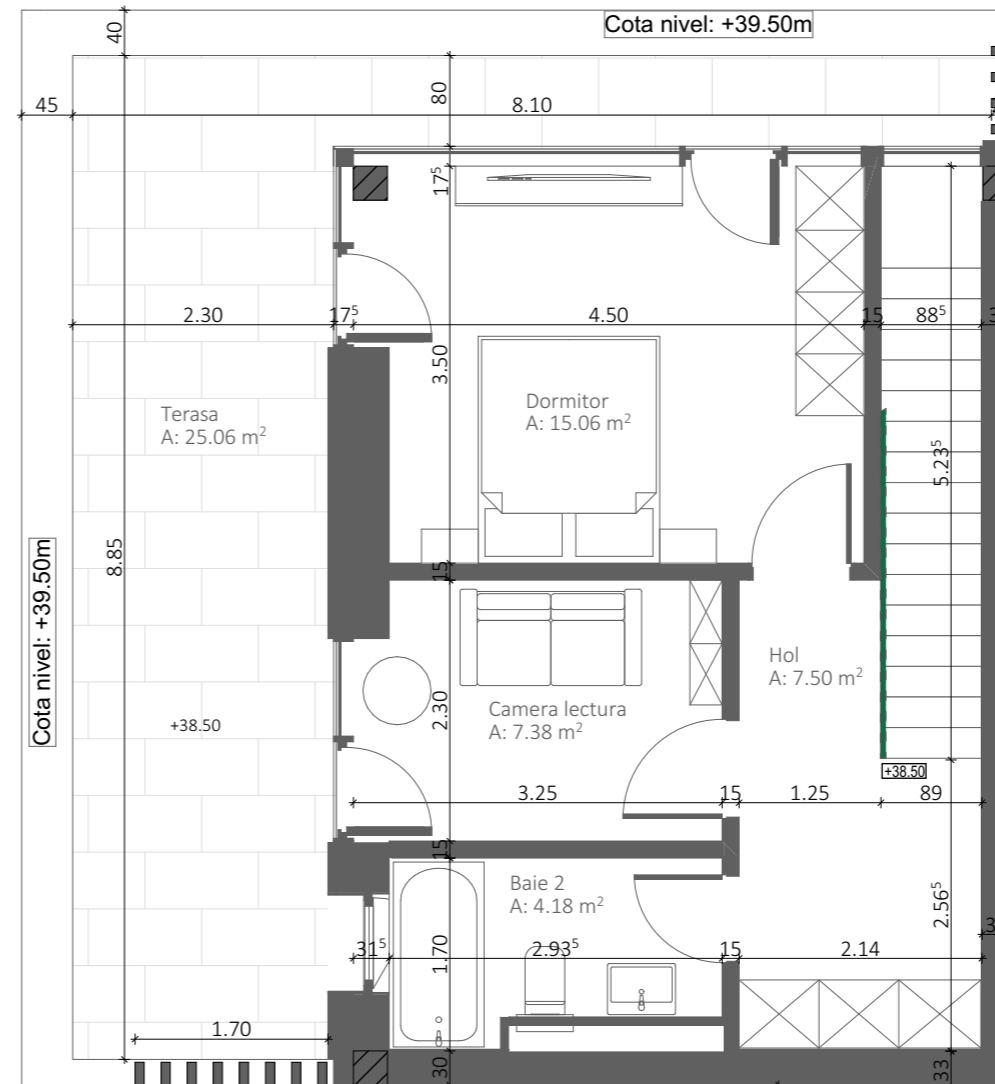


**NIVEL 1**



**NIVEL 2**

**Bloc A**  
**Apartment tip P1 - 3 camere PTh**  
**Etaj 11**

	Baie 1	4.81
	Baie 2	4.18
	Bucatarie + Loc luat masa	15.96
	Camera lectura	7.38
	Depozit	3.98
	Dormitor	15.06
	Hol	11.61
	Living	29.44
	Terasa	34.66
	Suprafata utila totala	127.08 m <sup>2</sup>
	Suprafata construita desfasurata	160.62 m <sup>2</sup>

