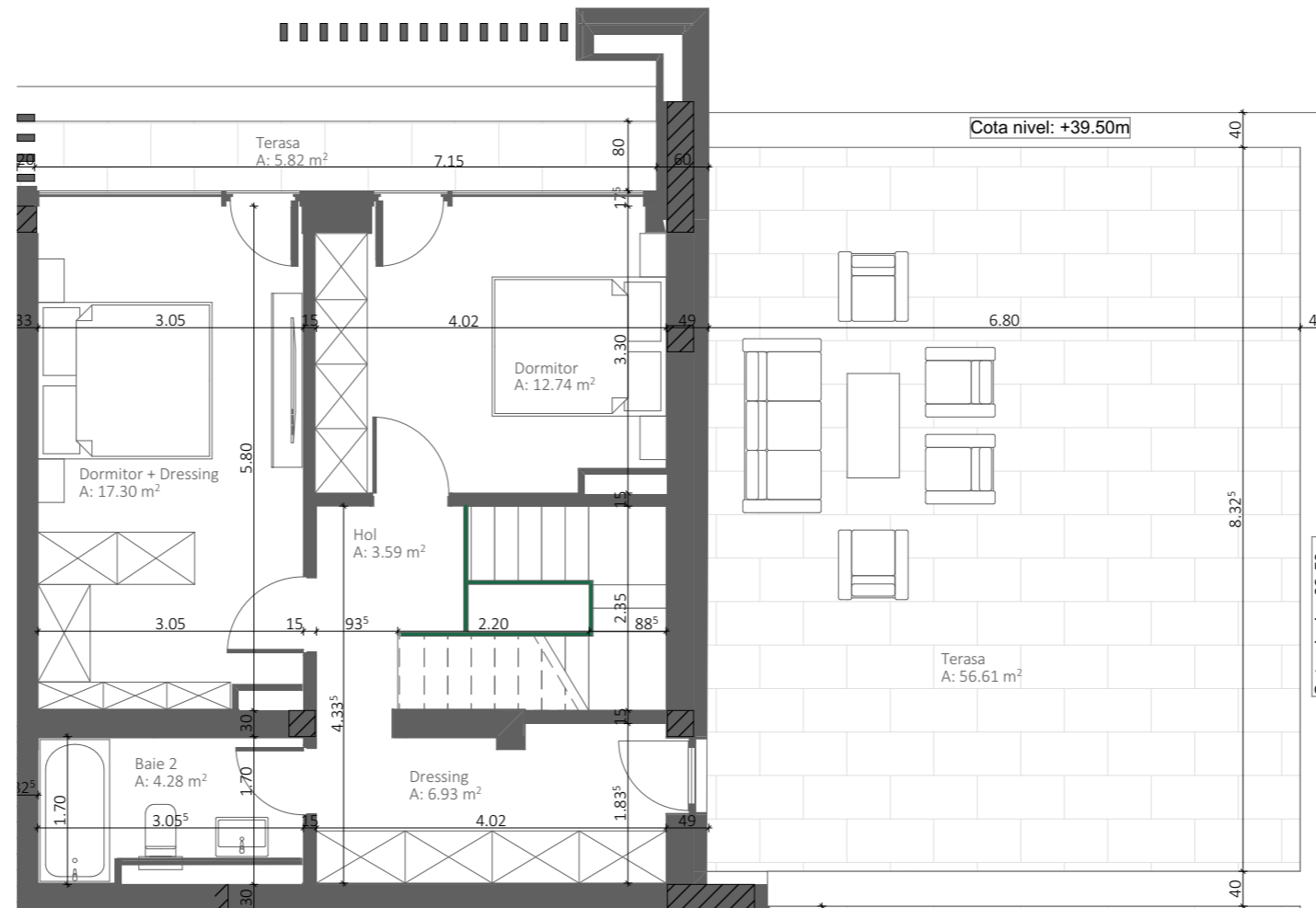


**NIVEL 1**



**NIVEL 2**

**Bloc A**  
**Apartment tip P2 - 3 camere PTh**  
**Etaj 11**

	Baie 2	4.28
	Baie 1	4.41
	Depozit	3.41
	Dormitor	12.74
	Dormitor + Dressing	17.30
	Dressing	6.93
	Hol	5.56
	Living + Bucatarie	29.11
	Terasa	73.15
	Suprafata utila totala	156.89 m <sup>2</sup>
	Suprafata construita desfasurata	199.33 m <sup>2</sup>

