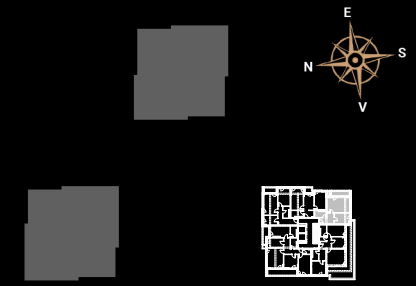


**Bloc B**  
**Apartment tip G1 - garsoniera**  
**Etaj 10**

	Baie	4.85
	Bucatarie	11.06
	Camera	20.93
	Depozit	3.50
	Hol	7.19
	Logie	7.67
	Suprafata utila totala	55.20 m <sup>2</sup>
	<b>Suprafata construita desfasurata</b>	<b>69.16 m<sup>2</sup></b>



Strada Carpatilor